



AGVISION MAX

By Farmers Choice

Hey Sara, tell me about this AgVision Program.

AgVision is a program that unlocks your soils full potential!

Our soils are made up of 3 components. The physical, chemical and biological.

I didn't know that! What is important about these 3 components, and how do they unlock my soil's full potential?



PHYSICAL



CHEMICAL



BIOLOGICAL

There is a vault of unavailable nutrients waiting to be withdrawn in our soils.

How do I make a withdrawal?

By influencing the driving forces that affect your chemical, biological and physical components of your soil using carbon, biology, enzymes and stimulants. Which is what the AgVision program is all about!

P 2,556 lbs

K 56,880 lbs

S 45,504 lbs

TOTAL POOL (Acid digestion)

Sara I've been making a yearly investment with my applied fertilizer. Where does that go?

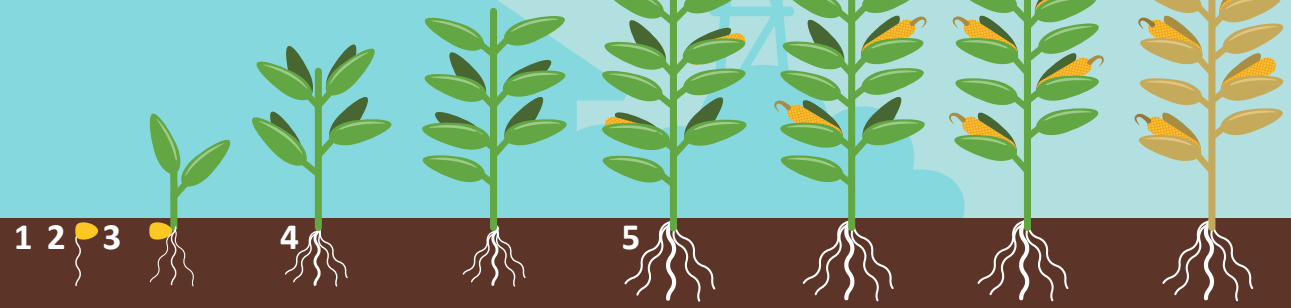


John the investment you've been making in applied fertilizer is not what you think it is. For every \$100 of phosphorus you are applying, you are only getting on average \$30 worth to the crop.

I know you're disappointed, but I have the AgVision playbook that will create a sustainable farm for generations to come. Let's take a look at the playbook.



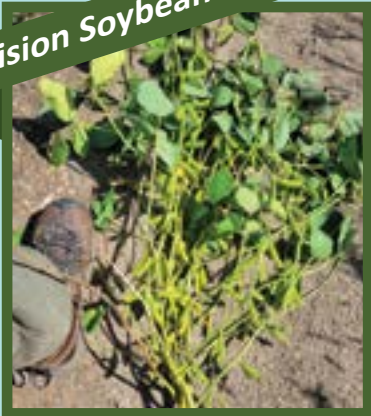
1. Spring pre-sprayer pass with biological.
2. Biological & fertility seed treat. (we do this for you)
3. In furrow carbon based liquid fertilizers and enzymes.
4. Post herbicide pass add carbon, fertility & a foliar stimulant.
5. Tasseling pass of a fungicide, amino protein, & carbon. (Can be flown on with the drone)



Fertilizer Reduction
40lbs N | 30lbs P | 40lbs K

CORN

AgVision Soybeans



1. Spring pre-sprayer pass with biological.
2. Biological & fertility seed treat.
3. In furrow carbon, liquid fertilizer, and enzymes. (Air seeder options available)
4. First post herbicide pass add carbon.
5. Second post herbicide pass add carbon, a stimulant, and amino.
6. Foliar R1 fungicide and carbon.
7. Foliar R2-R3 carbon, foliar fertility, and amino.

SOYBEANS

Fertilizer Reduction
20lbs P | 30lbs K



AgVision Wheat



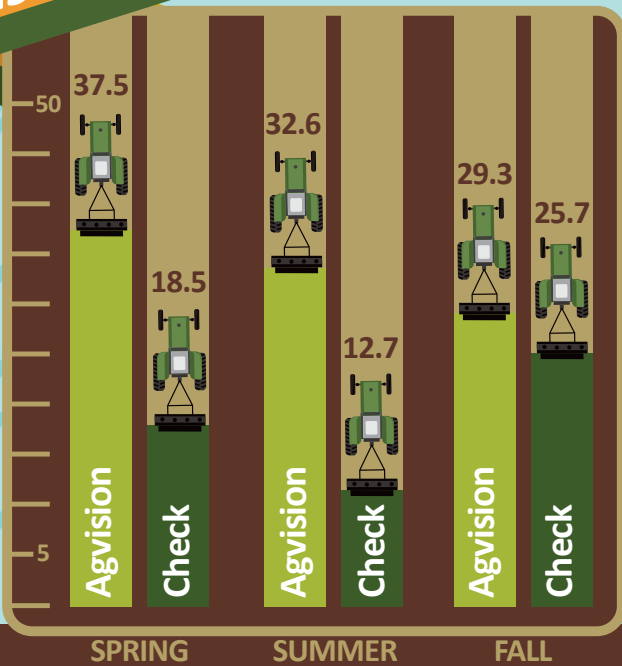
1. Spring pre-sprayer pass with biological.
2. Biological & fertility seed treat.
3. Herbicide pass add carbon, amino, and stimulant.
4. Flag leaf pass amino, foliar fertility, and carbon.
5. Flowering pass fungicide, amino, and carbon.

WHEAT

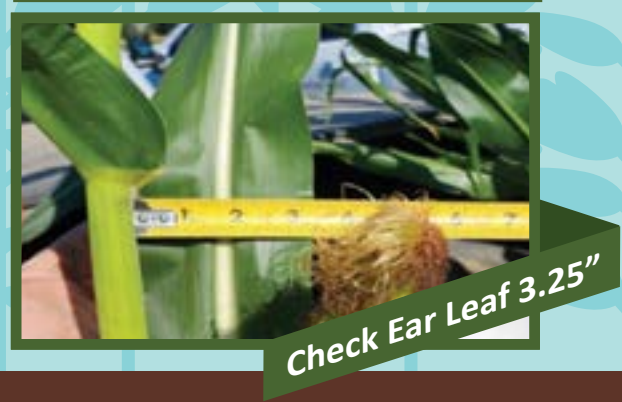
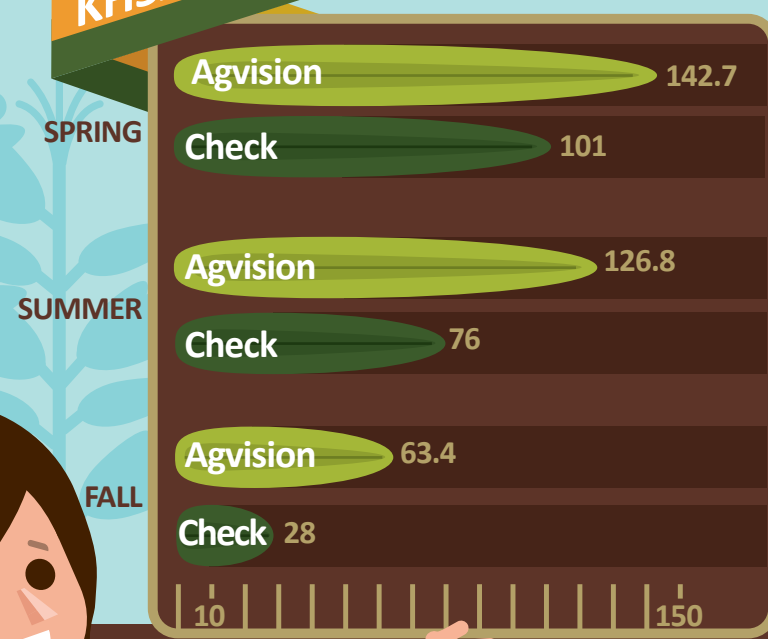
Fertilizer Reduction
20lbs P | 30lbs K



PH3A *Plant Available P



KH3A *Plant Available K





\$112.69 ROI +33 Bushel Yield Advantage	\$62.46 ROI +8.46 Bushel Yield Advantage	\$68.71 ROI +24 Bushel Yield Advantage	\$37.27 ROI +8.46 Bushel Yield Advantage	\$26.23 ROI +8 Bushel Yield Advantage
 AGVISION MAX IRRIGATED CORN STUDY	 AGVISION MAX IRRIGATED SOYBEAN STUDY	 AGVISION MAX DRYLAND CORN STUDY	 AGVISION MAX DRYLAND SOYBEAN STUDY	 AGVISION MAX DRYLAND WHEAT STUDY
 Phosphate Potassium 50%	 Phosphate Potassium 50%	 Nitrogen Phosphorus 25%	 Phosphate Potassium 50%	 Nitrogen Phosphorus 30%
25% Nitrogen		 Potassium Amonium Sulphate		 Potassium Micro Pak
Irrigated Turtle Lake, ND	Irrigated Turtle Lake, ND	Dryland Berthold, ND	Dryland Rugby, ND	Dryland Sawyer, ND

All plans come with a fertilizer reduction guide, a step by step printed & digital playbook, support from our agronomists, and tissue/soil result analysis using Agronomy 365 lab.

AgVision Max is a plan that will take your fields to their max performance.

AgVision is an entry level plan at a lower price point.

Packages Available:
160 | 540 | 1080 | Acres
Custom Packages Available



This looks like a great plan Sara! How do I get started?

Contact a Farmers Choice representative to schedule a free consultation!

I look forward to the future with AgVision Max!



www.AgVisionMax.com

1-888-285-7444



By Farmers Choice 